

Centralized Management Software

Control Center (3.X)



Key Features

- 16CH HD-SDI Stand-Alone DVR
- The World's First HDcctv Certified 16CH DVR
- 100/120fps Recording at 1080p, 200/240fps at 720p
- Adjustable Recording Quality/Speed Setup per Each Channel
- Support High Resolution Over 1200TV Line in Live/Playback
- Support Dual Codec(H.264,JPEG) / Multi Stream(Full HD/HD/D1/CIF)
- Support 1920x1080 Resolution via HDMI and VGA Port
- Built-in Multiplexer for 16CH Live Monitoring and Playback (1/4/9/16 Mode)
- Support IPFR (Intelligent Power Failure Recovery) File System
- 4 Internal SATA Type HDDs
- Support Max. 64TB(NVS04R Connection via Giga Ethernet) or Max 16TB(e-SATA)

- 16CH HD-SDI Stand-Alone DVR
- The World's First HDcctv Certified 16CH DVR
- 100/120fps Recording at 1080p, 200/240fps at 720p
- Adjustable Recording Quality/Speed Setup per Each Channel
- Support High Resolution Over 1200TV Line in Live/Playback
- Support Dual Codec(H.264,JPEG) / Multi Stream(Full HD/HD/D1/CIF)
- Support 1920x1080 Resolution via HDMI and VGA Port
- Built-in Multiplexer for 16CH Live Monitoring and Playback (1/4/9/16 Mode)
- Support IPFR (Intelligent Power Failure Recovery) File System
- 4 Internal SATA Type HDDs
- Support Max. 64TB(NVS04R Connection via Giga Ethernet) or Max 16TB(e-SATA)

Specifications

	Control Center Standard	Control Center Professional	Control Center Enterprise
GENERAL			
Maximum # of Units	1024	1024	1024
Maximum # of Monitors (Views)	2	6	4+50 External Monitor
Maximum # of Supported Division	1/4/9/13/26/25/36/49/64	1/4/9/13/26/25/36/49/64	1/4/9/13/26/25/36/49/64
H/W Support	HD Series DVR LH/EH/MH Series DVR MD Series DVR MPEG-4 WebEye Series NVS04S WinDvrS WinRDS	HD Series DVR LH/EH/MH Series DVR MD Series DVR MPEG-4 WebEye Series NVS04S WinDvrS WinRDS	HD Series DVR LH/EH/MH Series DVR MD Series DVR MPEG-4 WebEye Series NVS04S WinDvrS WinRDS
Video Format	H.264/MPEG4/JPEG	H.264/MPEG4/JPEG	H.264/MPEG4/JPEG
Audio Format	ADPCM/Truespeech/G.723	ADPCM/Truespeech/G.723	ADPCM/Truespeech/G.723
User Management	Yes	Yes Manage Units, Monitors by user separately	Yes Manage Units, Monitors by user separately
Account level	2	2	2
Max account	100	100	100
WNS (DDNS)	Yes	Yes	Yes
WRS (Dynamic IP Registration Service)	Yes	Yes	Yes

Specification

	Control Center Standard	Control Center Professional	Control Center Enterprise
MONITOR			
Performance	12 HD 1080p30	12 HD 1080p30	12 HD 1080p30
Real-Time Audio	Yes	Yes	Yes
Remote PTZ Control	Yes	Yes	Yes
Remote I/O Control	Yes	Yes	Yes
Save snapshot image	Yes	Yes	Yes
Quick Recording	Yes	Yes	Yes
Alarm Log Viewer	Yes	Yes	Yes
Save/Search Event List	Yes	Yes	Yes
Auto Action	Yes Alarm Popup, Buzzer	Yes Alarm Popup, Buzzer, Latch Window, Relay, e-Mail, Preset, Recording, Save Image	Yes Alarm Popup, Buzzer, Latch Window, Relay, e-Mail, Preset, Recording, Save Image
Rule based auto action	No	Yes	Yes
Error Management (Latch function)	No	Yes Items of errors to be managed are selectable freely	Yes Items of errors to be managed are selectable freely
Action Log	No	Yes User action, auto action	Yes User action, auto action
Log Save	Yes	Yes	Yes
Status Viewer	Yes	Yes	Yes
Auto Connection (Lost & Recovery)	Yes	Yes	Yes
Watermark	Yes	Yes	Yes
Keyboard Shortcuts	No	Yes	Yes
Joystick (WKC-100)	No	Yes	Yes
View set(group)	Yes	Yes	Yes
Map	Yes	Yes Section, Sub Map, Map Link	Yes Section, Sub Map, Map Link
Remote Login	No	No	Yes
PLAYBACK			
Playback	Yes	Yes	Yes
Backup (re4, avi)	Yes	Yes	Yes
Log Viewer	Yes	Yes	Yes
Timeline display (log)	Yes	Yes	Yes
Timeline index search	Yes	Yes	Yes
Go to a certain time	Yes	Yes	Yes
Calendar search	Yes	Yes	Yes
Playback event image	Yes	Yes	Yes
Speed playback(0.5 ~ 64x)	Yes	Yes	Yes
Smart Search	Yes	Yes	Yes
Thumbnail Search	Yes	Yes	Yes
Text Search	Yes	Yes	Yes
Snapshot / print	Yes	Yes	Yes
Zoom in/out image	Yes	Yes	Yes
Brightness/Contrast	Yes	Yes	Yes
Audio play	Yes	Yes	Yes
Fix Layout	No	Yes	Yes
UTILITES			
Web Viewer	No	No	Yes
Schedule Backup	Yes	Yes	Yes
DVR HDD Manager	Yes	Yes	Yes
File Converter (eye to bmp, rec to avi ...)	Yes	Yes	Yes
SYSTEM REQUIREMENT			
Recommended	Intel Core i7 3.4GHz 8GB of RAM 500GB HDD Radeon 1024MB PCI-E Graphic Cards Support AGP Accelate Support PCI-E 2.0 16x or higher 100/1000 Ethernet NIC Sound Card Windows 7	Intel Core i7 3.4GHz 8GB of RAM 500GB HDD Radeon 1024MB PCI-E Graphic Cards Support AGP Accelate Support PCI-E 2.0 16x or higher 100/1000 Ethernet NIC Sound Card Windows 7	Intel Core i7 3.4GHz 8GB of RAM 500GB HDD Radeon 1024MB PCI-E Graphic Cards Support AGP Accelate Support PCI-E 2.0 16x or higher 100/1000 Ethernet NIC Sound Card Windows 7
Minimum	Intel Core2Duo 2.93GHz 2GB of RAM 100GB HDD 128MB Graphic Card Support AGP Accelate 10/100/1000 Ethernet NIC Sound Card Windows XP	Intel Core2Quad 2.40GHz 4GB of RAM 500GB HDD 256MB PCI-E Graphic Card Support AGP Accelate 100/1000 Ethernet NIC Sound Card Windows7	Intel Core2Quad 2.40GHz 4GB of RAM 500GB HDD 256MB PCI-E Graphic Card Support AGP Accelate 100/1000 Ethernet NIC Sound Card Windows7

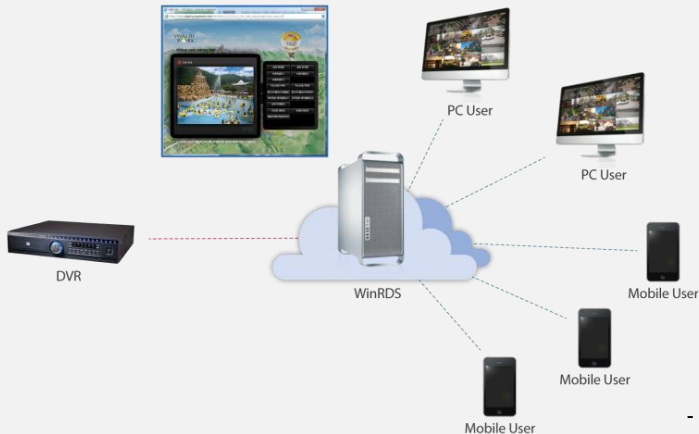
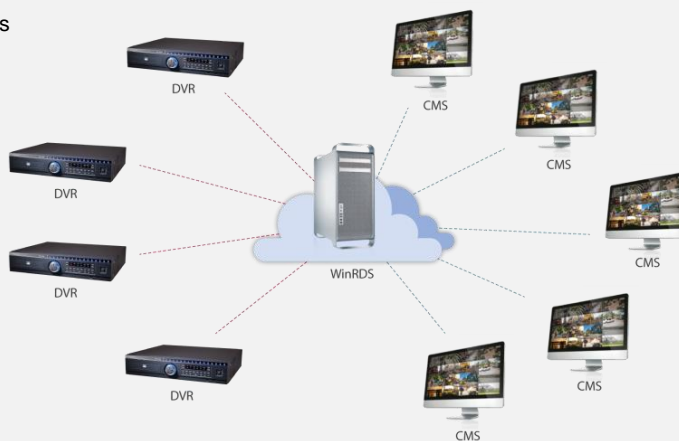
Streaming Software

WinRDS (Windows ReDistribution Server)

Key Features

- Streaming Server to Redistribute DVR Stream to multi Users
- Max. 512 Channels Transmission (500Mbps)
- Max. 512 Users Support (500Mbps)
- Authority Management for Access and Control based on User's Account

- In case DVR services full frame image from multiple PCs



- In case DVR services image via Public Website to multiple random users

Specifications

GENERAL

Max number of Registrable channel	512 channels (500Mbps)
Number of channel for service simultaneously	512(CIF 7fps)/ 250(CIF 30fps)/ 170(D1 15fps) / 140(720p 15fps)/ 80(1080p 15fps) (Unit: channel) Max. 500Mbps
Number of output stream for service simultaneously	512(CIF 7fps)/ 250(CIF 30fps)/ 170(D1 15fps) / 140(720p 15fps)/ 80(1080p 15fps) (Unit: stream) Max. 500Mbps
Remote Software	Control Center Std/Pro
User	100 user

SYSTEM REQUIREMENT

Minimum Requirement	Intel i7-870 CPU @2.93GHz or higher / 4GB RAM / 1TB or more HDD / PCI-E Gigabit Ethernet NIC Card x2
---------------------	--

Mobile Application Software

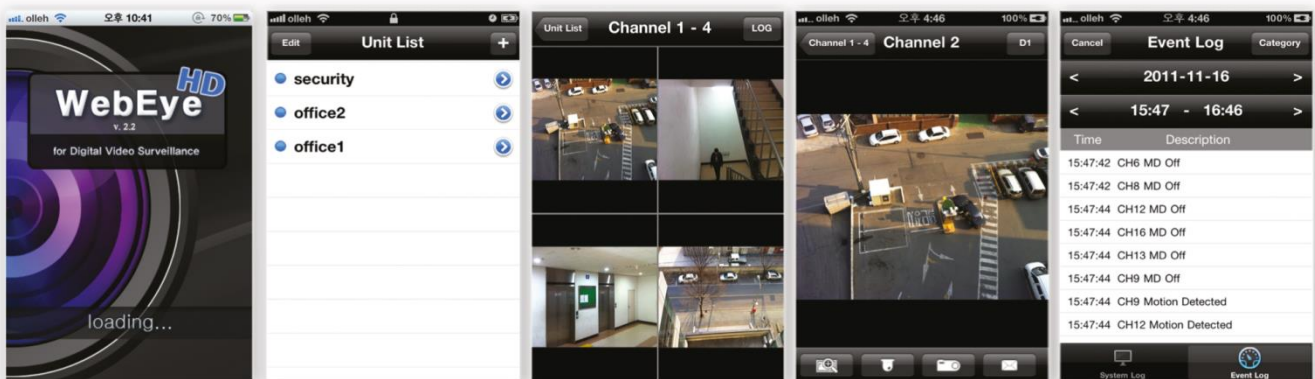
WebEye



Key Features

- Mobile Viewer for iPhone / Android Phone
- Support MH/LH/EG/HD series DVRs
- Max. 16 DVRs Support
- Dynamic IP unit connection
- Support QCIF / CIF / Half / D1 / 720p / 1080p resolution
- 4 screen division monitoring
- Streaming up to 30fps
- Support PTZ
- Support HD Resolution including D-Zoom
- Check Unit Status by Searching System logs
- Check alarm status by searching event log

Screen Shots



Specification

	iOS	Android
SUPPORT		
H/W	iPhone 3Gs/4G, iPod Touch 3G/4G, iPad, iPad2	All model (galaxy tab, izar tested)
OS	iOS 4.2 이상 (iOS 5.x Not Tested)	Android2.2 or upper(android 2.2 tested)
Device	HD Series DVR, LH/EH/MH Series DVR, MD Series DVR	HD Series DVR, LH/EH/MH Series DVR, MD Series DVR
SERVER		
List manager	Add, Remove, Modify	Add, Remove, Modify
Address	IP, ULR, WRS	IP, URL(DNS/DDNS)
Port	Support	Support
ID/Password	Support	Support
Discovery	TCP, WRS(up to 16)	TCP, WRS(up to 20)
VIDEO INPUT		
Protocol	WESP	WESP
Standard	NTSC, PAL, HD	NTSC, PAL
Resolution	QCIF, CIF, HALF, D1, 720P, 1080P	QCIF, CIF, HALF, D1
Compression	JPEG, H.264	JPEG
VIDEO DISPLAY		
Division	Single or 4 Divisions	Single or 4 Divisions
Frame rate	MAX CIF 30, Half 20, D1 7, 720P 4, 1080P 1, JPEG 1 fps (It ends on network)	1fps~5fps
DIGITAL ZOOM		
Support	D1, 720p, 1080p resolution	-
PTZ		
Protocol	CGI call	WESP
Command	Zoom In/Out, Tilt Up/Down, Pan Left/Right	Zoom In/Out, Tilt Up/Down, Pan Left/Right
LOG		
Type	System Log, Event Log	System Log, Event Log
Protocol	WESP	WESP
Search	Date (Event Log – Date + Time)	Date
System log filter	Nothing	Nothing
Event log filter	Status&Action "CH Pre Alarm Start" "CH Post Alarm Stop", "CH Recording Start", "CH Recording Stop", "Manual Recording Start", "Manual Recording Stop", "Unknown Code" Text "Text Input" Motion "Motion Detected", "MD Off" Alarm "Sensor On", "Sensor Off", "CH Network Event On", "CH Network Event Off", "CH Site Connected", "CH Site Disconnected", "CH Site Disconnected(Cont.)", "CH No Video", "CH Video Detected", "Bookmark"	Status&Action "CH Pre Alarm Start" "CH Post Alarm Stop", "CH Recording Start", "CH Recording Stop", "Manual Recording Start", "Manual Recording Stop", "Unknown Code" Text "Text Input" Motion "Motion Detected", "MD Off" Alarm "Sensor On", "Sensor Off", "CH Network Event On", "CH Network Event Off", "CH Site Connected", "CH Site Disconnected", "CH Site Disconnected(Cont.)", "CH No Video", "CH Video Detected", "Bookmark"
Limited	Up to 1000	Up to 300